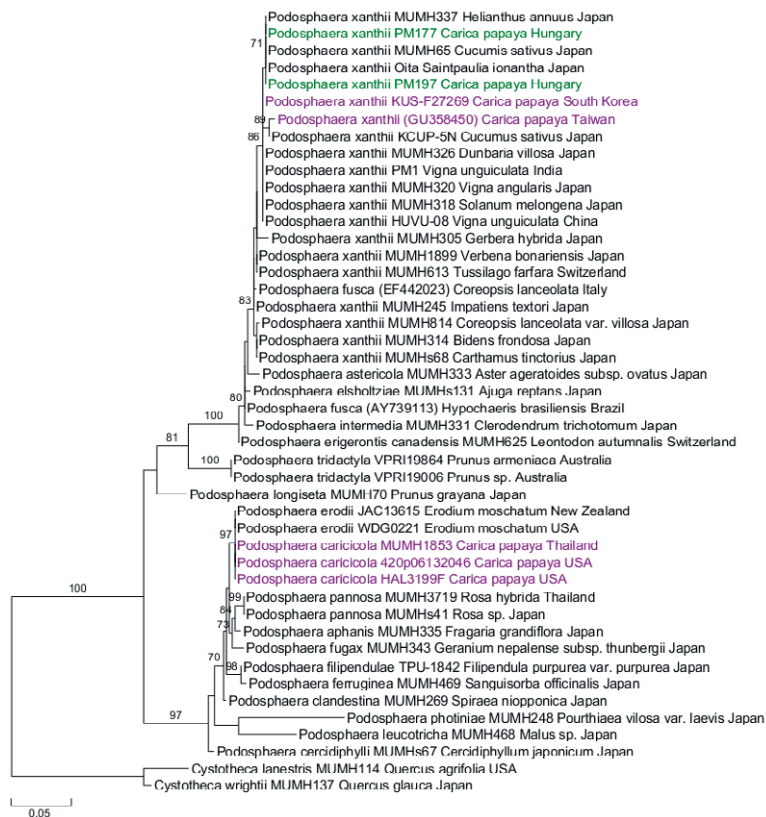
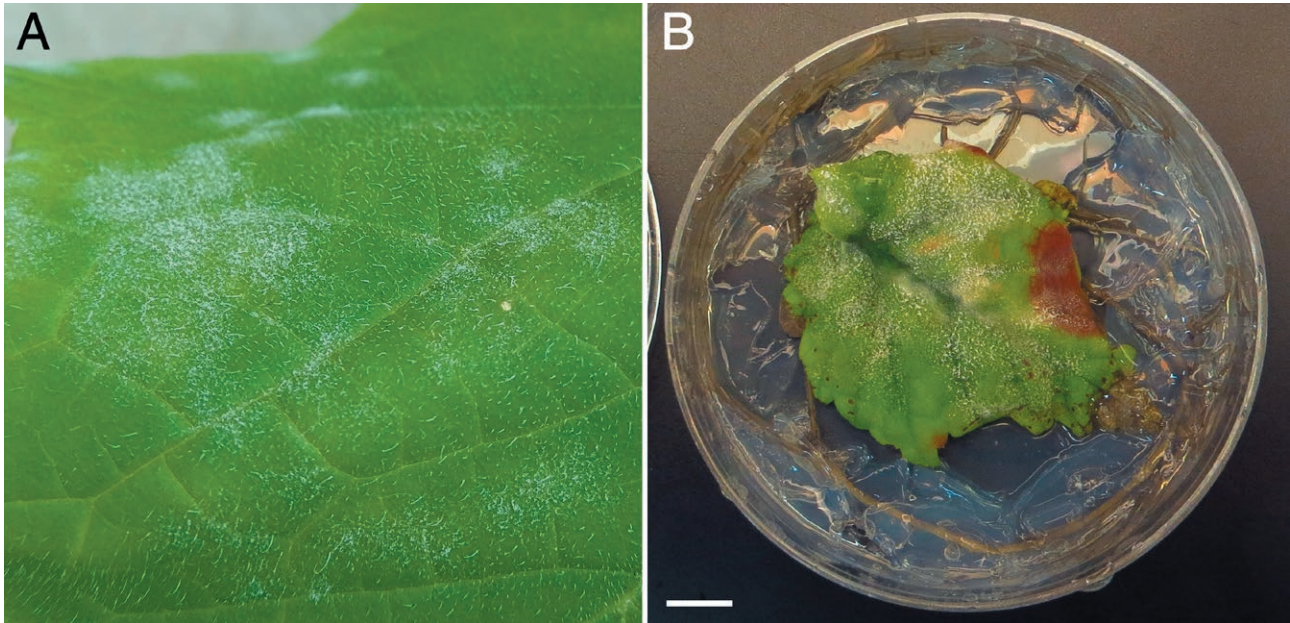


P. Canzoniere, S. Francesconi, S. Giovando, G. M. Balestra (2021). Antibacterial activity of tannins towards *Pseudomonas syringae* pv. *tomato*, and their potential as biostimulants on tomato plants. *Phytopathologia Mediterranea* 60(1): 23-36-11. doi: 10.36253/phyto-11732



**Supplementary Figure 1.** Phylogenetic tree with the greatest likelihood value resulting from the maximum likelihood (ML) analysis of ITS sequences of *Podosphaera xanthii* infecting papaya, and closely related powdery mildew species. Species names are followed by herbarium accession numbers (or GenBank accession numbers in parentheses if herbarium accession number is not available), the host plant species, and country of collection. Samples collected in the present study are in green font, while other powdery mildew samples from papaya are in purple. Bootstrap values were calculated from 1000 replicates in ML analysis (values below 70% and in subclades are not shown). Bar indicates 0.05 expected changes per site per branch.



**Supplementary Figure 2.** Symptoms after cross inoculations with powdery mildew from papaya. A) Cucumber leaves 11 d after inoculation with *Podosphaera xanthii* from papaya. B) *In vitro* grapevine leaves infected with powdery mildew, caused by *Erysiphe necator* originating from papaya. Bar = 1 cm.

**Supplementary Table 1.** List of analysed powdery mildew samples, their morphological types, places of collection, and GenBank accession numbers of the determined ITS and *Mcm7* sequences.

Morphological type	Sample designation	Powdery mildew fungal species	Place of collection	Accession numbers	
				ITS	<i>Mcm7</i>
1	PM177	<i>Podosphaera xanthii</i>	Budapest	MT658714	–
	PM197		Budapest	MT658715	–
2	0522	<i>Erysiphe</i> sp.	Budapest	MT658716	MT755388
	PM157a		Budapest	MT658717	MT755389
	PM157h		Budapest	MT658718	MT755390
3	PM157e	<i>Erysiphe cruciferarum</i>	Budapest	MT658719	–
	PM178		Győrújbarát	MT658720	MT755391
	PM191		Győrújbarát	MT658721	–
4	PM157c	<i>Erysiphe necator</i>	Budapest	MT658722	MT755392
	PM171		Budapest	MT658723	–
	PM180		Budapest	MT658724	MT755393
	PM181		Győrújbarát	MT658725	–
	PM182		Budapest	MT658726	–
	PM193		Győrújbarát	MT658727	–
	PM194		Győrújbarát	MT658728	–
	PM198		Budapest	MT658729	MT755394