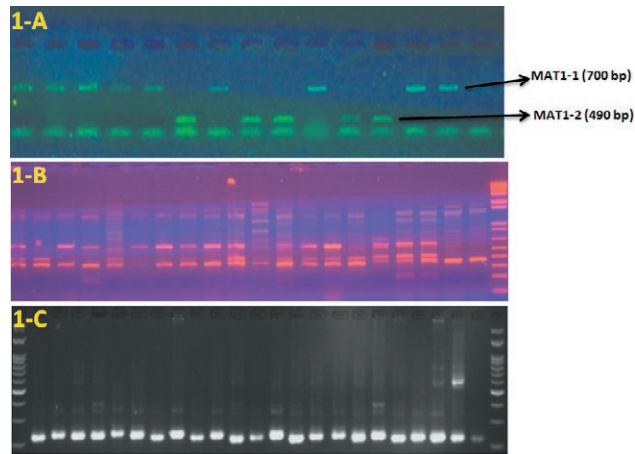
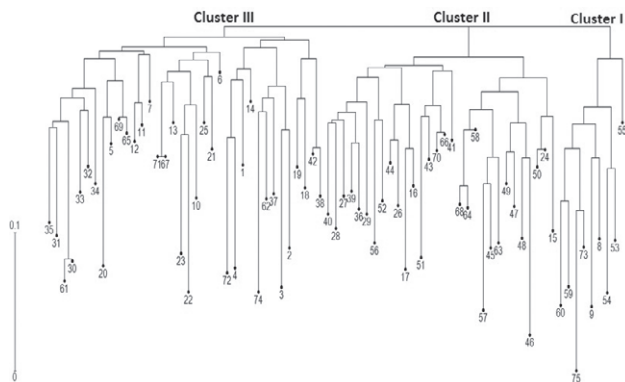


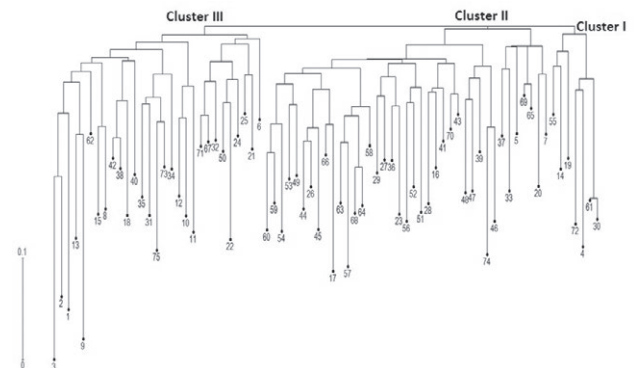
S. Farahani, R. Talebi, Mojdeh Maleki, R. Mehrabi, H. Kanouni (2021). Mating type distribution, genetic diversity and population structure of *Ascochyta rabiei*, the cause of Ascochyta blight of chickpea in western Iran. *Phytopathologia Mediterranea* 60(1): 3-11. doi: 10.36253/phyto-11616



**Supplementary Figure 1.** Amplification profile obtained with mating type specific marker (A), ISSR marker UBC807 (B), and SSR marker ArA06D (C) markers in *Ascochyta rabiei* isolates.



**Supplementary Figure 2.** Neighbor joining (NJ) phylogenetic tree using ISSR molecular data in 75 *Ascochyta rabiei* isolates.



**Supplementary Figure 3.** Neighbor joining (NJ) phylogenetic tree using SSR molecular data in 75 *Ascochyta rabiei* isolates.