

A. Larach, C. Torres, N. Riquelme, M. Valenzuela, E. Salgado, M. Seeger, X. Besoain (2020). Yield loss estimation and pathogen identification from *Botryosphaeria dieback* in vineyards of Central Chile over two growing seasons. *Phytopathologia Mediterranea* 59(3): 537-548. doi: 10.14601/Phyto-11235

CHILEAN *BOTRYOSPHAERIACEAE* ISOLATES OBTAINED IN THIS STUDY

Supplementary Table 1. *Botryosphaeriaceae* spp. obtained in 2010 from symptomatic 'Cabernet Sauvignon' vines in different locations in the O'Higgins and Maule Regions in Central Chile.

Species/Isolate ^a	Region	Locality	Season	Access No. GenBank ^b	
				ITS	BT
<i>Diplodia seriata</i>					
PUCV 1468	O'Higgins	Peralillo	Autumn	KM372579	
PUCV 1469	O'Higgins	Peralillo	Autumn	KM372580	KP762453
PUCV 1472	O'Higgins	Palmilla	Autumn	KM372581	KP762454
PUCV 1473	O'Higgins	Chépica	Autumn	KM372582	KP762455
PUCV 1475	O'Higgins	Palmilla	Autumn	KM372583	KP762456
PUCV 1477	O'Higgins	Peralillo	Autumn	KM372584	KP762457
PUCV 1479	O'Higgins	Peralillo	Autumn	KM372585	KP762458
PUCV 1480	O'Higgins	Peralillo	Autumn	KM372586	KP762459
PUCV 1492	Maule	Pencahue	Autumn	KM580510	KP762460
PUCV 1494	Maule	Pencahue	Autumn	KM580511	KP762461
PUCV 1495	Maule	Pencahue	Autumn	KM580512	KP762462
PUCV 1548	O'Higgins	Palmilla	Spring	KM580513	KP762463
PUCV 1549	O'Higgins	Peralillo	Spring	KM580514	KP762464
PUCV 1550	O'Higgins	Palmilla	Spring	KM580515	KP762465
PUCV 1551	O'Higgins	Chépica	Spring	KM580516	KP762466
PUCV 1552	Maule	Pencahue	Spring	KM580517	KP762467
PUCV 1553	Maule	Pencahue	Spring	KM580518	KP762468
PUCV 1558	O'Higgins	Chépica	Spring	KM580519	KP762469
PUCV 1561	O'Higgins	Palmilla	Spring	KM580520	KP762470
PUCV 1563	Maule	Pencahue	Spring	KM580521	KP762471
PUCV 1564	Maule	Talca	Spring	KM580522	KP762472
PUCV 1565	O'Higgins	Peralillo	Spring	KM870222	KP762473
PUCV 1566	O'Higgins	Peralillo	Spring	KM580523	KP762474
PUCV 1567	Maule	Batuco	Spring	KM580524	KP762475
PUCV 1570	O'Higgins	Peralillo	Spring	KM580525	KP762476
<i>D. mutila</i>					
PUCV 1476	O'Higgins	Peralillo	Autumn	KM580526	KP762477
PUCV 1493	Maule	Pencahue	Autumn	KM580527	KP762478
PUCV 1510	Maule	Batuco	Autumn	KM580528	KP762479
PUCV 1556	O'Higgins	Peralillo	Spring	KM580529	KP762480
PUCV 1568	Maule	Pencahue	Spring	KM580530	KP762481
<i>Neofusicoccum australe</i>					
PUCV 1509	Maule	Talca	Autumn	KM870227	KP762486
PUCV 1559	Maule	Talca	Spring	KM870228	KP762487
<i>N. parvum</i>					
PUCV 1471	O'Higgins	Peralillo	Autumn	KM870223	KP762482
PUCV 1547	O'Higgins	Peralillo	Spring	KM870224	KP762483
PUCV 1557	O'Higgins	Palmilla	Spring	KM870225	KP762484
PUCV 1560	Maule	Talca	Spring	KM870226	KP762485
<i>Spencermartinsia viticola</i>					
PUCV 1474	O'Higgins	Palmilla	Autumn	KM870229	KP762488

^a Isolates in bold were used in the phylogenetic tree

^b ITS = internal transcribed spacer region; BT = β -tubulin gene.

Supplementary Table 2. *Botryosphaeriaceae* spp. obtained in 2018 from symptomatic ‘Cabernet Sauvignon’ vines in different locations in the O’Higgins and Maule Regions in Central Chile.

Species/Isolate ^a	Region	Locality	Season	Access No. GenBank ^b		
				ITS	BT	EF1- α
<i>Diplodia seriata</i>						
PUCV 2090	O’Higgins	Peralillo	Autumn	MT023558	MT063125	MT120819
PUCV 2091	O’Higgins	Peralillo	Autumn	MT023559	MT063126	MT120829
PUCV 2092	O’Higgins	Peralillo	Autumn	MT023560	MT063127	MT120830
PUCV 2095	O’Higgins	Chépica	Autumn	MT023561	MT063128	MT120831
PUCV 2096	O’Higgins	Chépica	Autumn	MT023562	MT063129	MT120820
PUCV 2097	O’Higgins	Peralillo	Autumn	MT023563	MT063130	MT120832
PUCV 2098	O’Higgins	Peralillo	Autumn	MT023564	MT063131	MT120833
PUCV 2099	O’Higgins	Peralillo	Autumn	MT023565	MT063132	MT120834
PUCV 2100	Maule	Pencahue	Autumn	MT023566	MT063133	MT120821
PUCV 2101	Maule	Pencahue	Autumn	MT023567	MT063134	MT120822
PUCV 2113	O’Higgins	Peralillo	Autumn	MT023568	MT063135	MT120835
PUCV 2115	O’Higgins	Peralillo	Autumn	MT023569	MT063136	MT120823
PUCV 2117	Maule	Pencahue	Autumn	MT023570	MT063137	MT120825
PUCV 2118	O’Higgins	Palmilla	Spring	MT023571	MT063138	MT120826
PUCV 2119	O’Higgins	Peralillo	Autumn	MT023572	MT063139	MT120836
PUCV 2120	O’Higgins	Palmilla	Autumn	MT023573	MT063140	MT120837
PUCV 2142	Maule	Batuco	Autumn	MT023574	MT063141	MT120827
PUCV 2168	O’Higgins	Peralillo	Spring	MT023575	MT063142	MT120838
PUCV 2169	O’Higgins	Peralillo	Spring	MT023576	MT063143	MT120839
PUCV 2170	O’Higgins	Peralillo	Spring	MT023577	MT063144	MT120840
PUCV 2171	O’Higgins	Peralillo	Spring	MT023578	MT063145	MT120828
PUCV 2172	O’Higgins	Peralillo	Spring	MT023579	MT063146	MT120824
PUCV 2173	Maule	Pencahue	Spring	MT023580	MT063147	MT120841
PUCV 2175	Maule	Pencahue	Spring	MT023581	MT063148	MT120842
PUCV 2176	Maule	Batuco	Spring	MT023582	MT063149	MT120844
PUCV 2178	O’Higgins	Chépica	Spring	MT023583	MT063150	MT120843
PUCV 2179	O’Higgins	Palmilla	Spring	MT023584	MT063151	
PUCV 2180	Maule	Pencahue	Spring	MT023585	MT063152	
PUCV 2181	O’Higgins	Palmilla	Spring	MT023586	MT063153	
PUCV 2183	Maule	Pencahue	Spring	MT023587	MT063154	
<i>D. mutila</i>						
PUCV 2174	Maule	Pencahue	Spring	MT023588	MT044309	MT120845
PUCV 2177	O’Higgins	Peralillo	Spring	MT023589	MT044310	MT120846
<i>Neofusicoccum parvum</i>						
PUCV 2166	O’Higgins	Palmilla	Spring		MT120848	MT120847

^a Isolates in bold were used in the phylogenetic tree

^b ITS = internal transcribed spacer region; BT = β -tubulin gene; EF1- α = elongation factor alpha.

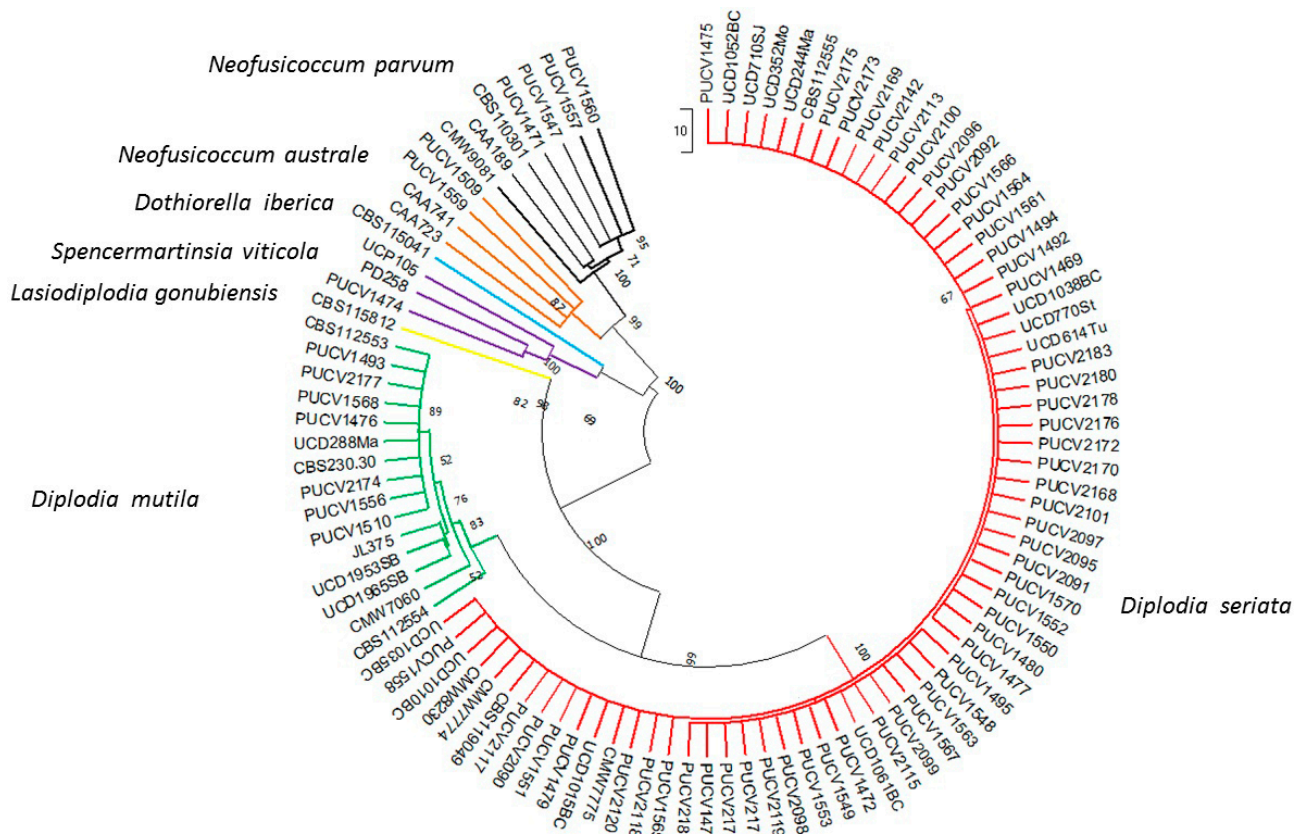


Figure S1. Phylogenetic tree of isolates of *Diplodia seriata*, *D. mutila*, *Neofusicoccum parvum*, *N. australe*, and *Spencermartinsia viticola*, based on Maximum Parsimony (MP) analysis of ITS and β -tubulin loci. Chilean isolates with PUCV code were sequenced in this study. MP bootstrap values >50 are shown above the branches. *Lasiodiplodia gonubiensis* strain CBS 115812 was used as the outgroup.